



NEWSLETTER

FRIDAY 17TH NOVEMBER 2023

ISSUE NO.10

EXCELLENCE IN EVERYTHING



Ofsted
Good
Provider



EXCELLENCE IN EVERYTHING-ACHIEVING GREATNESS THAT LASTS A LIFETIME

Message from Mr Taylor

This week, Mrs Nandhra and I joined a host of headteachers and leaders from across the city at the Birmingham Education Partnership (BEP) 'Learning to shape Birmingham 2023' conference. Events such as this provide leaders with the valuable opportunity to come together to discuss and engage in thought-proving professional dialogue around improving the quality of education for our children. Over the two days, a number of speakers shared insightful research and rhetoric around the educational horizon. The good news is I am confident that - through **Excellence in Everything** -we are on the right path.

Professor Pedro Noguera dean of the University of Southern California's Rossier School of Education, posed the question "As leaders, are we reproducing inequities or expanding opportunities in our schools". Our school curriculum Intent statement opens with the line "At Warren Farm Primary School we are committed to '**Excellence In Everything**', bringing **equality of opportunity** to our children through an ambitious curriculum that reflects the ever changing horizon of multicultural Britain". Potential parents for our Reception intake for 2024 have identified the breadth of our curriculum offer. This week, this has included character building sessions with MPCT, Emergency First Aid with Bishop Vesey's Grammar School, Bikeability cycling proficiency lessons and entrepreneurship workshops with F2DITC. A key message from one speaker at the conference was that 'Tradition is the biggest obstacle to education'. The examples given of our curriculum offer this week alone demonstrate that at Warren Farm we are doing things a little differently. To use an analogy, instead of giving everybody a shoe, we are giving our children the shoe that fits them - ensuring equity for all of our children. Let me be clear, we are not discounting the academic, which is obviously vital to our children's future achievements. At Warren Farm, academic success will come as a result of the curriculum offer we provide to develop talent in **ALL** of our children by providing teaching and learning to motivate and cultivate curiosity while promoting responsibility, empathy and most importantly character.

The conference was closed by Diana Osagie, the founder of courageous leadership and the institute of Women's Leadership who made this statement "In someones classroom this week sits the Prime Minister of 2043!" My responseWhy not Warren Farm?

Let's make it a great weekend

Mr Taylor

**Great accomplishments start
with great aspirations**

DATES FOR YOUR CALENDAR

| | |
|-----------------------|---|
| Mon 20th November | Bikeability week 5/6/NW |
| Mon 20th November | Phonics parent workshops 1CO 9:00-9:30 |
| Tue 21st November | 3AG, 4Dn and 3/4SK Stone Age workshops |
| Wed 22nd November | Phonics parent workshops 2HM 9:00-9:30 |
| Thur 23rd November | Phonics parent workshops 1/2YG 9:00-9:30 |
| Fri 15th December | Christmas Fayre 3:30pm-5:30pm |
| Tue 19th December | Nursery and Reception Nativity |
| Fri 22nd December | Break up for Christmas 1:00pm |

COURAGE

HONESTY

INTEGRITY

RESPECT

**SELF
DISCIPLINE**



Aylesbury Crescent
Birmingham B44 ODT
www.warrenfarm-primary.co.uk
0121 373 3885

twitter

@warren_farm_pri

Ofsted
Good
Provider



NEWSLETTER

FRIDAY 17TH NOVEMBER 2023

ISSUE NO.10

EXCELLENCE IN EVERYTHING



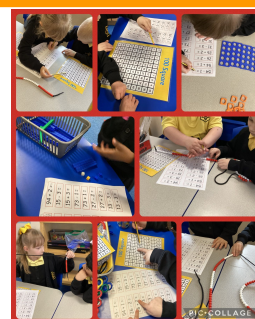
EARLY YEARS



We have had such a busy week of stories this week! Nursery have been making porridge for the 3 bears in their story Goldilocks and the 3 bears. They have been acting out the story in their role play area, as well as learning the Goldilocks nursery rhyme. In Reception, we have been learning how to make 3 in different ways using cubes, numicon and counters. Unfortunately, punctuality in Reception has been declining recently; please make sure your child is in school before the gate closes at 8:50. We have also noticed a rise in unhealthy snacks - we encourage you to provide fruit, yoghurts or plain biscuits with **no nuts** for snack time. Please also ensure any grapes are cut in half for safety! Finally, please continue to read with your child every night and comment in their diary.

KEY STAGE 1

This week in Year 2, children have been practising their addition and subtraction skills. The children have used a wide range of mathematical representations in order to support their understanding. Children in Year 1 have attended our local allotments and investigated what strategies plants have to cope with the cold weather. They even solved the mystery of why some trees lose their leaves and why some do not.



ATTENDANCE

This week, I would like to clarify information around taking 'Leave in Term Time'. Head teachers may not grant any leave of absence during term time unless there are exceptional circumstances. In this instance, the head teacher will determine the length of time a child can be away from school. Please note, leave will not be granted for the purposes of a family holiday. This could result in a fixed penalty fine being issued by the local authority and you may be fined £60 per child, per parent. Therefore two parents and two children could potentially receive fines amounting to a £240. **Unfortunately, these fines have been issued by school already this academic year.** If you do need to request leave in term time, please request a form from the office.

| | |
|-------|-------|
| NAH | 93.8% |
| RMH | 93.2% |
| 1CO | 94.4% |
| 1/2YG | 88.9% |
| 2HM | 96.3% |
| 3AB | 96.6% |
| 3/4SK | 98.2% |
| 4DN | 97.7% |
| 5AG | 90.4% |
| 5/6NW | 97.8% |
| 6BP | 94% |

CHRISTMAS FAYRE

On Friday 15th December, we will be holding our Christmas Fayre. This will take place in the school halls and playgrounds. We will have a number of exciting Christmas themed stalls and activities for children and families to enjoy. There will be a Christmas raffle with a range of 'sought after' prizes so make sure you purchase your ticket.

To support us with the Christmas Fayre we will be holding some non-uniform days where parents will be asked to donate items that can be used on different stalls. Below is a list of the dates and the donation item required:

Friday 24th November - Bottles

Friday 1st December - Sweets and Chocolates

Friday 8th December - Gift sets

We appreciate your support and look forward to celebrating the festive period with you.





NEWSLETTER

FRIDAY 17TH NOVEMBER 2023

ISSUE NO.10

EXCELLENCE IN EVERYTHING



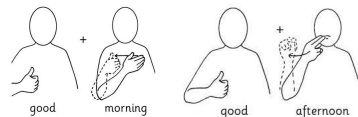
SAFEGUARDING

This week's safeguarding focus is related to positive parenting techniques to help support you with challenging behaviour at home. Children's needs and behaviours can change as they grow and it is how we respond to those changes that can make a difference. Every child needs love, guidance, rules and boundaries. It is important to have set routines and be consistent with these. Rewards and sanctions can be used to manage challenging behaviour. Explain to your child the rewards and sanctions set by yourselves and then ensure that you are seeing these through. Always remain cool and try not to get into a confrontation with your child, talk to them about the behaviours being displayed and try to find the underlying cause for the behaviours being displayed.

SEND

This week, we have been looking at different ways in which we can communicate our thoughts and feelings with each other. Staff have been teaching the children some Makaton signs. Makaton is a unique language programme that uses symbols, signs and speech to enable people to communicate. It supports the development of essential communication skills such as attention and listening, comprehension, memory, recall and organisation of language and expression.

Here are a couple of symbols they have been looking at.

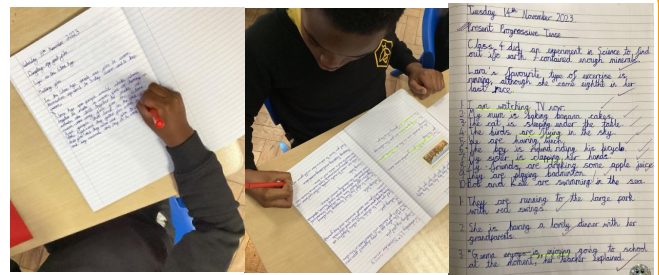


CHILD OF THE WEEK

| | |
|-------|---------------------|
| NAH | Jacob Morrall |
| RMH | Ziah Clayton-Maragh |
| 1CO | Fadiyah Adio |
| 1/2YG | Jude Smith-Melia |
| 2HM | Sara Ubaid |
| 3AB | Theo Lane Harnett |
| 3/4SK | Rosie-Leigh Pace |
| 4DN | Aurelia Tano |
| 5AG | Bella White |
| 5/6NW | Ellie-Mai Simpson |
| 6BP | Leen Qteishat |

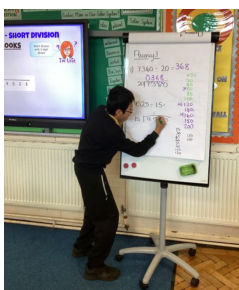
LOWER KEY STAGE 2

It has been another busy week in Year 3 and 4 this week. In English this week, there has been a focus on a variety of skills across the phase including fact files and playscripts. It has been lovely to see the beautiful presentation and joined cursive handwriting in most books. Please encourage handwriting practice with your child at home and ask your teacher for any letter join guidance if needed.



UPPER KEY STAGE 2

It seems as though we have some budding teachers in our midst as children across Year 5 and 6 continue to develop their oracy skills by teaching their classmates. In Year 5, children have taken part in another Young Leaders workshop, this week focusing on teamwork! They did not let the bad weather stop them! Year 6 have also taken the wet weather in their stride as most of the children took part in Bikeability (a cycle training programme). Next week, 5/6NW will be taking part, and the following week, 5AG. Please make sure children are wrapped up for the colder weather with hats, scarves and gloves.





NEWSLETTER

FRIDAY 17TH NOVEMBER 2023

ISSUE NO.10

EXCELLENCE IN EVERYTHING



CHILDREN IN NEED

This week we supported Children in Need with a SPOTacular non uniform day where the school went spotty for the day. Together we can make a difference. Thank you to everyone who donated to this wonderful cause. Events such as these demonstrate to our children how their actions can positively impact the lives of others beyond the school gates #ExcellenceinEverything



BIKEABILITY



This week, children in 6BP have taken part in the Bikeability programme. We have seen some 'non-riders' learn to ride unaided on two wheels. What an accomplishment! Some children have also had the opportunity to venture out of school into our local area where they learnt to negotiate hazards such as traffic lights and roundabouts. Once again, the Bikeability instructors have commented on the children's manners, enthusiasm and engagement. The sense of achievement the children gained from this experience was evident. Well done all who participated this week.

PHONIC WORKSHOPS

Miss Magee will be holding phonics parent workshops for parents/carers of children in Year 1 and 2 next week at 9:00am in the main school hall.

Monday 20th November - 1CO
 Wednesday 22nd November - 2HM
 Thursday 23rd November - 1/2YG



We look forward to welcoming you to the session to work alongside your child and see how you can support them further with their early reading

FOOTBALL ACTIVATORS

On Tuesday this week, we were joined by XXXXX from Sparkactive to support in the delivery of a number of girls football initiatives. During the morning girls from KS1 and KS2 took part in 'Wildcats' taster coaching sessions. After this, our Year 5 and 6 girls received further classroom



teaching to support them in delivering daily lunchtime girls football games and activities to children across the school. Well done girls for demonstrating Excellence in Everything



Aylesbury Crescent
 Birmingham B44 ODT
 www.warrenfarm-primary.co.uk
 0121 373 3885



@warren_farm_pri





At National Online Safety, we believe in empowering parents, carers and trusted adults with the information to hold an informed conversation about online safety with their children, should they feel it is needed. This guide focuses on one of many devices which we believe trusted adults should be aware of. Please visit nationalcollege.com for further guides, hints and tips for adults.

What Parents & Carers Need to Know about

SMART TVs

Smart TVs connect to the internet without the need for a set-top box or streaming device, letting users access a range of features through the TV set itself: from on-demand content apps like BBC iPlayer to streaming services such as Netflix, as well connecting to smartphones and other wireless devices. Most new televisions are internet enabled – so whether you're thinking of upgrading your home viewing system or buying an additional TV for your child's room, it's now even more important to consider the online safety aspects.

WHAT ARE THE RISKS?

AGE-INAPPROPRIATE CONTENT

From Netflix to Disney+ to Prime Video, there is a plethora of streaming services available. While these services offer content catering for younger viewers, they also provide material for more mature audiences. If you don't have parental controls set up on your accounts, your child could find themselves being exposed to shows and movies with adult themes, strong language and violence.

INCREASED SCREEN TIME

The array of content available through smart TVs could lead to your child spending excessive amounts of time in front of the screen. Not only can prolonged screen time distract from important activities such as schoolwork or exercise, but experts have also warned that endless hours in front of the box can lead to health problems including obesity, poor sleeping patterns and depression.

REMOTE-CONTROL RETAIL

Like many online devices, smart TVs facilitate digital purchases: buying a new app or the latest season of a favourite show, for example. If your child has access to a bank card and isn't restricted by spending controls on the system, they could run up a sizeable bill through a smart TV fairly quickly – especially if they're not quite old enough to fully appreciate the value of money.

UNCONVINCING SECURITY

As Internet of Things (IoT) devices, smart TVs can be uniquely vulnerable to attack. Experts warn that internet-enabled TVs tend not to support high-level security software, so you won't always be able to download strong antivirus programmes like you would on a phone or computer. Being targeted by hackers could be deeply upsetting for your child, as well as putting their personal data at risk.

A SILENT SPY?

Some smart TVs already collect data on users' viewing habits and then display targeted advertising based on that personal information – while there have also been reports of internet-enabled TVs (and the apps installed on them) being used to 'eavesdrop' on owners. In models with a built-in microphone (for voice activation), third parties could potentially listen in on someone's home life.

CONTACT FROM STRANGERS

Many smart TVs can be used for web browsing, social media and live streaming – all of which could allow unknown users to contact your child (or vice versa). If your child engages with these functions of the TV, a stranger could potentially discover their contact information and potentially then use it to obtain even more sensitive personal details, such as your home address.

Advice for Parents & Carers

MAKE IT A FAMILY THING

Family TV time is a great way to model the responsible enjoyment of technology – showing your child how to use the smart TV safely for when they're old enough to watch it independently. You could also take this opportunity to establish some healthy TV boundaries, such as time limits on their daily viewing or how to make sure they're only watching content that's appropriate for their age.

CREATE CHILD PROFILES

Much like with smartphones and tablets, apps can be downloaded onto smart TVs: from free content platforms such as BBC iPlayer to paid-for services like Prime Video. Most of these apps allow you to create a separate account for your child which has different settings to your own – suggesting more child-friendly material and reducing the possibility of them viewing explicit content.

SET UP PARENTAL CONTROLS

It's likely that your smart TV has built-in parental controls, which not only let you filter out age-inappropriate shows, movies and games but can also restrict in-app purchasing, so your child can't accidentally spend money through the device. When you've enabled these safeguards, have an open conversation with your child about the reasons, helping them to understand the potential risks.

CONSIDER THE LOCATION

If you're concerned about the online safety hazards that a smart TV might pose to your child, you could consider where in your home you put the device. The safest option would be to place the smart TV in a shared family space – so that an adult is usually nearby and able to supervise while your child's watching it – rather than in the relative privacy of a bedroom.

Meet Our Expert

Carly Page is an experienced technology journalist with a track record of more than 10 years in the industry. Previously the editor of techtabloid The Inquirer, Carly is now a freelance technology journalist, editor and consultant.



@natonlinesafety

/NationalOnlineSafety

@nationalonlinesafety

@national_online_safety

Users of this guide do so at their own discretion. No liability is entered into. Current as of the date of release: 15.11.2023



Aylesbury Crescent
Birmingham B44 0DT
www.warrenfarm-primary.co.uk
0121 373 3885



@warren_farm_pri

